



*Print your dreams*

# Index

- References.....3
- Wood Design .....4
  - European Elm.....5
  - Nordic Oak.....6
  - Nordic Amber Oak.....7
  - Vintage Walnut.....8
  - Natural Walnut.....9
  - Red Moon Walnut.....10
  - Ancient Ash.....11
  - Manhattan Red Cherry.....12
- Marble Design.....13
  - White Calacatta.....14
  - Onix.....15
- Stone Design.....16
  - Polish Terrazo.....17
  - Ostuni.....18
  - Grey Pulpis.....19
  - Black Stone.....20
- Brick Design.....21
  - London / Medieval Vert. ....22
  - London / Medieval Horiz. ...23
- Rust Design.....24
  - Oxidized.....25
  - Corten.....25
  - Industrial.....25
- Concrete Design.....26
  - Industrial.....27
  - Medal Bronze.....27
  - Anthracite.....27
- Customizable Design.....28
- Features Silbonit Fancy.....30

# Print Your Dreams

You dream, we print..

Silbonit  
Fancy  
Fibercement



# Silbonit Fancy Fibercement

Silbonit Fancy guarantees to designers and architects the extraordinary possibility to express their creativity and imagination.



Directly on a Silbonit through-coloured panel is now possible to reproduce any type of personalized image, decoration or effect.





# Wood Design

Silbonit Fancy Wood is now available in 8 different designs. The new range consists of wood finishes that meet the most demanding architectural requirements. The available wood finishes are characterised by both light and dark shades, and by continuous and lively patterns. Silbonit Fancy Wood brings the warmth and elegance of wood to a fibre-cement panel utilised in an interior and exterior applications. The exceptionally realistic visual effect and its limited environmental impact make it an interesting product.

## Nominal dimensions available - mm

2500 x 1200	3000 x 1250
2500 x 1250	3050 x 1200
3000 x 1200	3050 x 1250

## Nominal thicknesses available - mm

6	8	10
---	---	----

# Wood - European Elm

3 Faces supplied randomly or based on specific requests. - Pictures colours and features have to be considered indicative.

*European Elm*

W008-1



*European Elm*

W008-2



*European Elm*

W008-3



# Wood - Nordic Oak

3 Faces supplied randomly or based on specific requests. - Pictures colours and features have to be considered indicative.

*Nordic Oak*  
W009-1



*Nordic Oak*  
W009-2



*Nordic Oak*  
W009-3



# Wood - Nordic Amber Oak

3 Faces supplied randomly or based on specific requests. - Pictures colours and features have to be considered indicative.

*Nordic Amber Oak*

W09G-1



*Nordic Amber Oak*

W09G-2



*Nordic Amber Oak*

W09G-3



# Wood - Vintage Walnut

3 Faces supplied randomly or based on specific requests. - Pictures colours and features have to be considered indicative.

*Vintage Walnut*

W010-1



*Vintage Walnut*

W010-2



*Vintage Walnut*

W010-3





# Wood - Natural Walnut

3 Faces supplied randomly or based on specific requests. - Pictures colours and features have to be considered indicative.

*Natural Walnut*  
W10G-1



*Natural Walnut*  
W10G-2



*Natural Walnut*  
W10G-3



# Wood - Red Moon Walnut

3 Faces supplied randomly or based on specific requests. - Pictures colours and features have to be considered indicative.

*Red Moon Walnut*

W10R-1



*Red Moon Walnut*

W10R-2



*Red Moon Walnut*

W10R-3



# Wood - Ancient Ash

3 Faces supplied randomly or based on specific requests. - Pictures colours and features have to be considered indicative.

*Ancient Ash*

W013-1



*Ancient Ash*

W013-2



*Ancient Ash*

W013-3



# Wood - Manhattan Red Cherry

3 Faces supplied randomly or based on specific requests. - Pictures colours and features have to be considered indicative.

*Manhattan Red Cherry*

W14R-1



*Manhattan Red Cherry*

W14R-2



*Manhattan Red Cherry*

W14R-3





# Marble Design

Silbonit Fancy Marble range consists of 3 types of finishes that can be offered in a matt or a gloss variety.

Marble is one of the most valuable, elegant and timeless materials used in construction.

The precious marble effect is digitally reproduced on a much thinner Silbonit panel, which is larger in size and light-weight that allows easy handling and installation.

## Nominal dimensions available - mm

2500 x 1200	3000 x 1250
2500 x 1250	3050 x 1200
3000 x 1200	3050 x 1250

## Nominal thicknesses available - mm

6	8	10
---	---	----

# Marble - White Calacatta

3 Faces supplied randomly or based on specific requests. - Pictures colours and features have to be considered indicative.

*White Calacatta*

M004-1



*White Calacatta*

M004-2



*White Calacatta*

M004-3



# Marble - Onix

3 Faces supplied randomly or based on specific requests. - Pictures colours and features have to be considered indicative.

*Onix*

M005-1



*Onix*

M005-2



*Onix*

M005-3





## Stone Design

Silbonit Fancy Stone offers 4 different designs in its new range. Stone is one of the oldest material used worldwide to realize impressive architectural works, such as the Colosseum, the Great Wall of China and many others.

Although construction methods have changed over time, stone remains one of the most aesthetically appreciated material.

Silbonit Fancy Stone allows you to relive the historicity and beauty of this material through an extraordinary digital reproduction process. The rough surface combined with natural finishes gives the sensation of looking at a real stone product.

### Nominal dimensions available - mm

2500 x 1200	3000 x 1250
2500 x 1250	3050 x 1200
3000 x 1200	3050 x 1250

### Nominal thicknesses available - mm

6	8	10
---	---	----



# Stone - Polish Terrazo

3 Faces supplied randomly or based on specific requests. - Pictures colours and features have to be considered indicative.

*Polish Terrazo*

S005-1



*Polish Terrazo*

S005-2



*Polish Terrazo*

S005-3



# Stone - Ostuni

3 Faces supplied randomly or based on specific requests. - Pictures colours and features have to be considered indicative.

*Ostuni*  
S006-1



*Ostuni*  
S006-2



*Ostuni*  
S006-3



# Stone - Grey Pulpis

3 Faces supplied randomly or based on specific requests. - Pictures colours and features have to be considered indicative.

*Grey Pulpis*  
S007-1



*Grey Pulpis*  
S007-2



*Grey Pulpis*  
S007-3



# Stone - Black Stone

Pictures colours and features have to be considered indicative.

*Black Stone*

S012-1





# Brick Design

Exposed brick wall is part of the building culture of many countries around the world that has maintained tradition over the years. Silbonit Fancy – Brick; was created with the aim of preserving its origins in countries where bricks are an essential aesthetical factor, while offering the advantage of eco-sustainable benefits of a ventilated façade.

Brick design is one of the most popular patterns among architects in recent years. It perfectly fits the modern “Industrial” style, where the skeleton of the building is enhanced.

## Nominal dimensions available - mm

-	-
-	-
3000 x 1200	-

## Nominal thicknesses available - mm

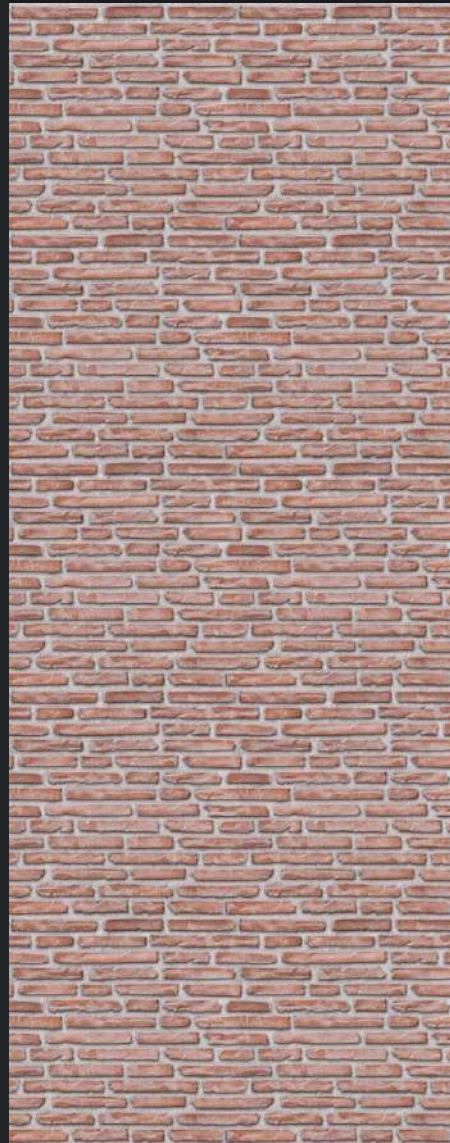
6	8	10
---	---	----

# Brick - London / Medieval - Vertical

Pictures colours and features have to be considered indicative.

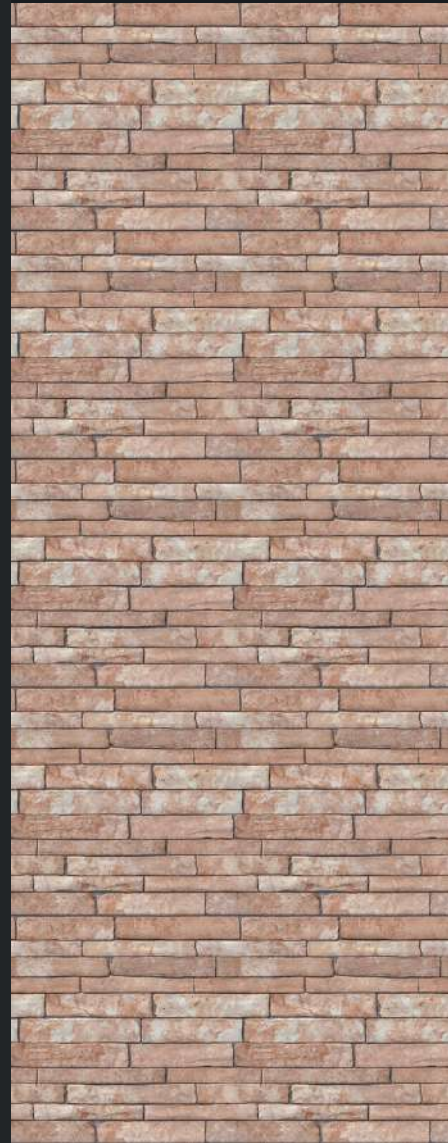
*London*

P006-1



*Medieval*

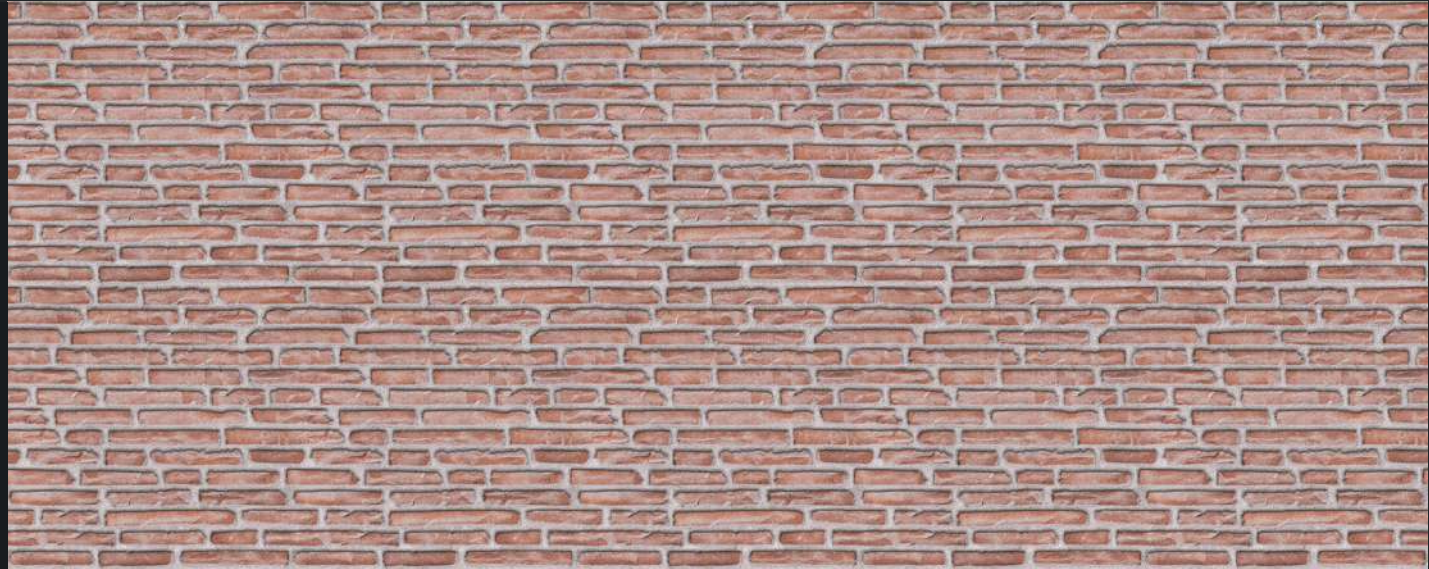
P007-1



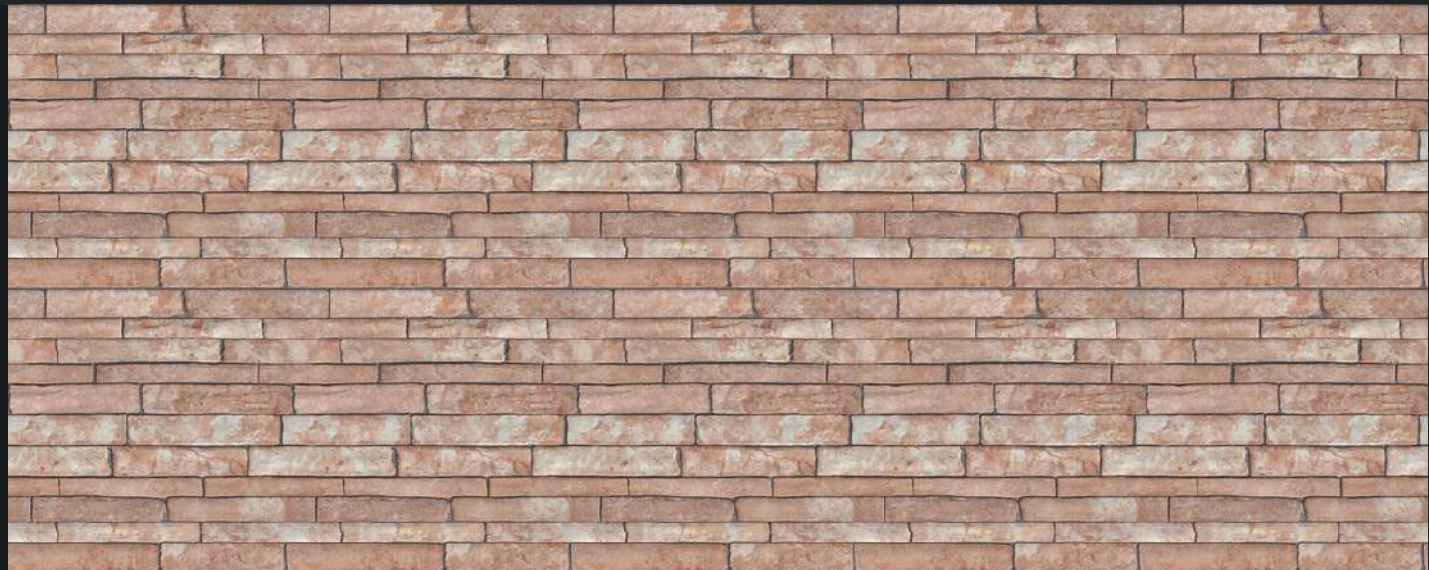
# Brick - London / Medieval - Orizzontali

Pictures colours and features have to be considered indicative.

*London*  
PO6H-1



*Medieval*  
PO7H-1





# Rust Design

Silbonit Fancy Rust collection is perfectly suited to the modern “industrial” architectural style, through which architects wish to anticipate the flow of time by offering a wild and lived-in finish. Like the other designs, the reproduction is done digitally on a Silbonit panel that fits into the eco-sustainable context of the ventilated façade as well as the interior linings.

## Nominal dimensions available - mm

2500 x 1200	3000 x 1250
2500 x 1250	3050 x 1200
3000 x 1200	3050 x 1250

## Nominal thicknesses available - mm

6	8	10
---	---	----



# Rust - Oxidized / Corten / Industrial

Pictures colours and features have to be considered indicative.

*Oxidized*

P005-1



*Corten*

P05R-1



*Industrial*

P05T-1





# Concrete Design

The Silbonit Fancy Cement collection is an alternative offered to designers who wish to clad exterior facades or interiors with a finish that best illustrates the deterioration caused by weathering over years. This collection is also perfectly suited to the industrial style that emphasises the lived-in look of materials.

## Nominal dimensions available - mm

2500 x 1200	3000 x 1250
2500 x 1250	3050 x 1200
3000 x 1200	3050 x 1250

## Nominal thicknesses available - mm

6	8	10
---	---	----

# Concrete - Industrial / Medal Bronze / Anthracite

Pictures colours and features have to be considered indicative.

*Industrial*

S008-1



*Medal Bronze*

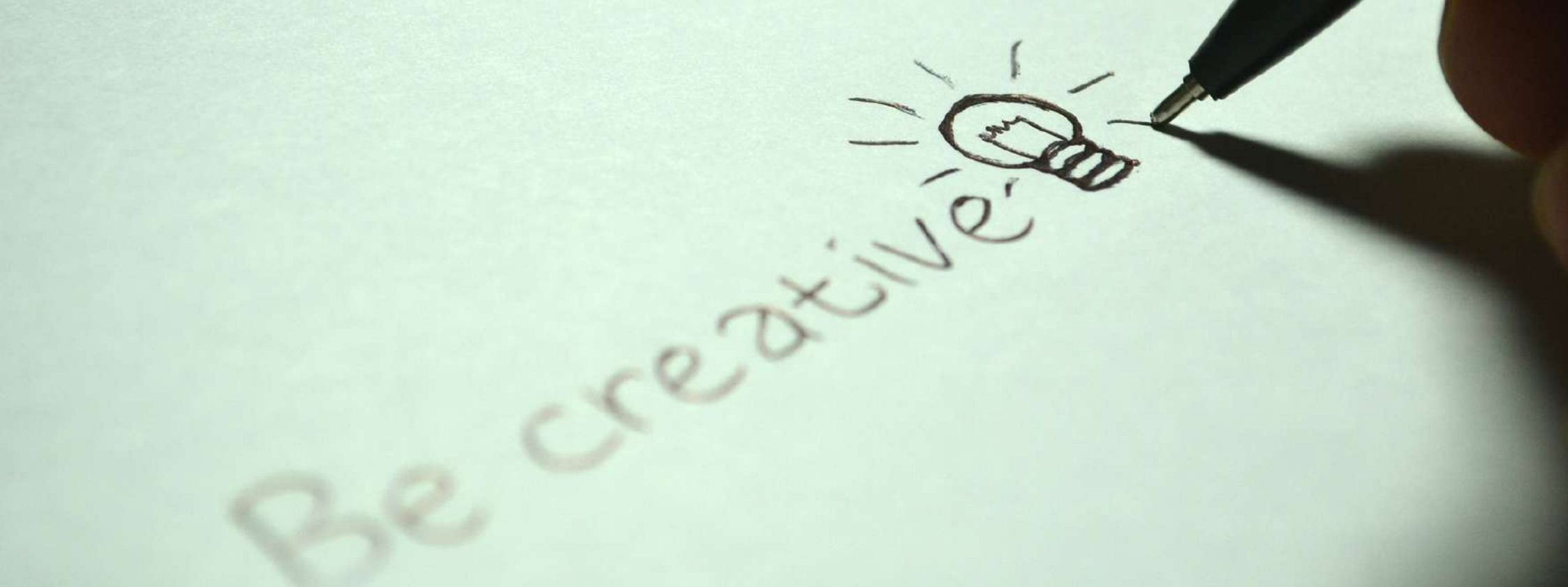
S010-1



*Anthracite*

S011-1





## *Customizable Design*

Upon request, it is possible to reproduce customized images or print designs which makes it possible to decorate the external facades or internal surfaces of schools, stores, kindergartens or other types of buildings with shapes and other desired colors.

*You dream, we print...*

### Nominal dimensions available - mm

2500 x 1200	3000 x 1250
2500 x 1250	3050 x 1200
3000 x 1200	3050 x 1250

### Nominal thicknesses available - mm

6	8	10
---	---	----

# Customizable - You dream, we print...

Pictures colours and features have to be considered indicative.



# Silbonit Fancy

## Features



Silbonit Fancy, produced in compliance with EN 12467:2012+A2:2018, can be applied for ventilated facades and interior linings. Silbonit Fancy is also available in FP (Fire Rated) Product.



Silbonit Fancy, like all the Silbonit products, has a fantastic fire proof behaviour: it's classified as A2 s1 d0. Silbonit Fancy is also available in FP version and consequently it is classified as an A1 product.



Silbonit Fancy is UV tested in compliance with UNI-EN 1062-11:2003



Silbonit Fancy is maintenance free.

# Silbonit Fancy

## Features



Silbonit Fancy is antigraffiti: the empirical tests carried out have shown that graffiti can be removed.



Silbonit Fancy is available in 2 finishes: Matt and Gloss.



Silbonit Fancy is an eco friendly product: the possibility to reproduce any kind of wood, stone or marble decor, limits significantly the human impact on the environment.

## Contacts

**Address:** Via Francesco Lenzi, 26 - 25028 Verolanuova (BS)

**Phone number:** (+39) 0309920900 ext 1

**E-mail:** [info@sil-lastre.com](mailto:info@sil-lastre.com)



**SOCIETÀ  
ITALIANA  
LASTRE** S.p.A.



[www.sil-lastre.com](http://www.sil-lastre.com)

Catalog Fancy 2022